

**Address**

Vysoká škola  
ekonomie a managementu  
Nárožní 9a  
158 00 Praha 13 - Stodůlky

**Contact Numbers**

Phone: +420 841 133 166  
E-mail: [info@vsem.cz](mailto:info@vsem.cz)

[www.vsem.cz](http://www.vsem.cz)



- History** ■ The University of Economics and Management (UEM) was founded in 1994. Initially, it was a unit of a consulting organization, Management Centre, which specialized in business restructuring. In August 1996, the centre started its BBA programme, and since 1997, it has been a freestanding legal entity, providing education and supporting activities such as research, publishing and the provision of information services. In October 1997, the Centre introduced a master's level programme. In December 2000, the full European Council for Business Education (ECBE) accreditation was given for the study programmes Bachelor of Business Administration (BBA) and Master of Business Administration (MBA).

In October 2001, State approval of the Czech Ministry of Education was issued for the private University of Economics and Management and, at the same time, the Ministry accredited the bachelor's study programme in Economics and Management (field of study – Taxes, Business Economics). This programme was successfully reaccredited at the beginning of 2005.

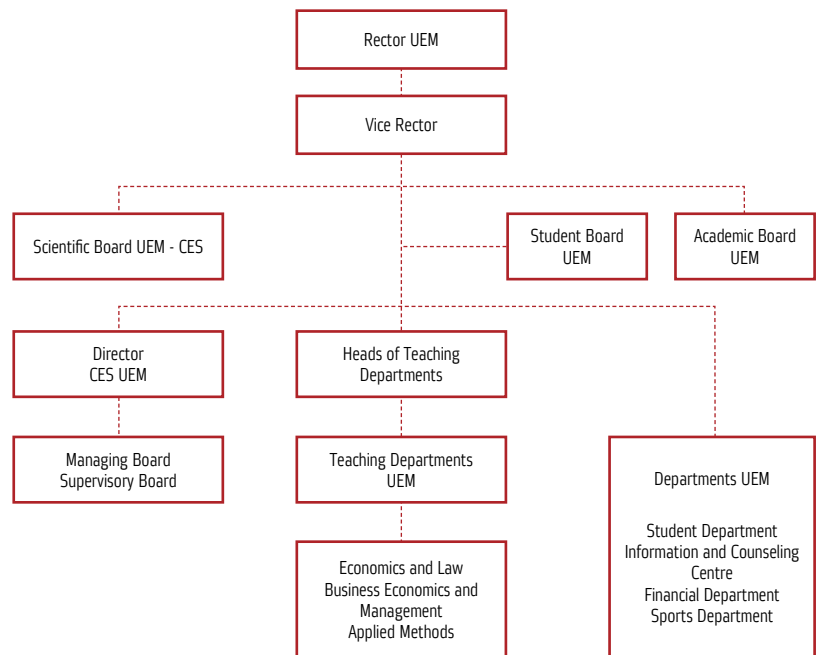
In the next years, new programmes (fields of study) were accredited by the Czech Ministry of Education:

- March 2006 – a master's study programme in Economics and Management – field of study Economic Analysis and Competitive Strategy, in part-time form of study
- May 2007 – a bachelor's study programme in Economics and Management (field of study Business Economics), in full-time form of study
- June 2007 – a bachelor's study programme in Economics and Management – a new field of study in full-time and part-time form of study – Communication and Human Resources

- June 2007 – a master’s study programme in Economics and Management – a new field of study in part-time form of study – Corporate Management

In 2004, the research Centre for Economic Studies (CES) was established. The main research activities are directed at competitiveness of the Czech economy in international comparison (within the EU-27) and at identifying related economic (particularly structural) and political implications for the support of economic convergence and transition to a knowledge-based economy. The research activities, including field surveys and case studies, have been realized since 2005 within the framework of long-term research projects. CES supervises a master’s degree program in Economic Analysis and Competitiveness Strategy, in which the results of the research activities have been exploited extensively.

## Structure of the Institution



## Organisation of Studies

- The academic year is divided into three terms: September – December (1st term: autumn), January – April (2nd term: winter), May – August (3rd term: summer). The study programmes are scheduled in three different ways:

K1 part-time study (Bachelor’s study programmes, Master of Business Administration programme): direct teaching is realized as classwork on non-working days (Saturdays, Sundays). The teaching days follow at 14 or 21 day intervals, in accordance with the schedule and the year of the studies. The teaching day starts at 9 a.m. and lasts till 5 p.m., with an adequate number of breaks.

K2 part-time study (Master's study programmes – Ing. Degree): direct teaching is realized as classwork (e.g. Friday - Saturday, Saturday - Sunday). The teaching days follow at 14 or 21 day intervals, in accordance with the schedule and the year of the studies. The teaching day starts at 9 a.m. and lasts till 5 p.m., with an adequate number of breaks. The blocks of seminars run as individual and team tuition sessions with the course instructor.

P1 full-time study (Bachelor's study programmes): direct teaching is realized as classwork blocks on working days (e.g. Monday – Tuesday – Wednesday, Tuesday – Wednesday – Thursday, Wednesday – Thursday – Friday). The teaching days follow at weekly intervals. The teaching day starts at 8:45 a.m. and lasts till 4 p.m.  
 8:45 a.m. – 12 a.m. – lecture,  
 1 p.m. – 3:30 p.m. – exercises,  
 3:30 p.m. – 4 p.m. – study tuition.

An entrance examination is held three times in the year, at the beginning of each term (autumn, winter and summer term). There are no deadlines for applications, only recommended deadlines for submitting the forms (1<sup>st</sup> December, 1<sup>st</sup> March, 1<sup>st</sup> April). Applications received after the recommended deadline are automatically included with the next batch of applicants.

Applicants for the bachelor's study programme have to meet the following prerequisites:

1. Secondary school education (school leaving examination).
2. Passing the entrance tests (study test, learning style test).
3. Interview (full-time students) – professional orientation/motivation/discussion.

Applicants for the master's study programme (Ing. degree) have to meet the following prerequisites:

1. University education (at least bachelor's level).
2. Passing the entrance tests (study test, learning style test, test in economics, and test in English language).
3. Interview – professional orientation / motivation / discussion.

Applicants for the MBA degree master's study programme have to meet the following prerequisites:

1. University education (at least bachelor's level).
2. Adequate length of previous work experience (at least 3 years).
3. Passing the entrance tests (study test, learning style test).
4. Interview – professional orientation/motivation/discussion.

The school fees are fixed for the standard length of studies in a Contract of a study programme realization.

<b>Study programme</b>	<b>Length of study</b>	<b>Form of study</b>	<b>Tuition total / per year</b>
Economics and Management (Bc.)	3,5 years	K1 – part-time	120.000 / 35.000 CZK
Economics and Management (Bc.)	3 years	P1 – full-time	120.000 / 40.000 CZK
Economics and Management (Ing.)	2,5 years	K2 – part-time	90.000 / 40.000 CZK
Master of Business Administration	2 years	K1 – part-time	100.000 / 50.000 CZK

The UEM annually allocates study (merit scholarships), sports and Olympic (scholarships for students that excel in sports), accommodation (scholarships for full-time students), social (scholarships for child benefit recipients), special (scholarships for handicapped students and single mothers) and enterprise scholarships (scholarships for students employed within one institution).

At both, undergraduate and graduate level, students are encouraged to spend at least one term at universities outside the Czech Republic. Since 2008, the UEM cooperates with more than 30 universities under the LLP Erasmus Programme.

## Basic Statistical Data in Academic Year 2007/2008

<b>Academic year</b>	<b>07/08</b>
Number of students – bachelor’s study programme (part-time)	1642
Number of students – bachelor’s study programme (full-time)	164
Number of students – master’s study programme (part-time)	84
Number of students – MBA study programme (part-time)	210
Number of graduates	112
Number of academic staff	64